

Architects: Arthur Gibney & Partners
Quantity Surveyor: Eugene Beglan & Associates
Main Contractor: The Patton Group
Services Engineer: Mercury Engineering
Structural Engineer: Varming (VMRA)

Revenue Commissioners

The Revenue Commissioner's recent deal with Dunnes Stores means that its staff have moved from its old offices in Castle House and Wicklow House to a new location at the bottom of South Great Georges Street.

Once its lengthy lease of those buildings ran out, the Revenue looked for alternative space close to its offices in Dublin Castle. The new block completed by Dunnes Stores proved an ideal alternative and staff moved in early 2008.

Allied Workspace were appointed to the fit out for the new 5 storey office block for the Revenue Commissioners and worked in close proximity with the architectural team in Arthur Gibney Partnership.

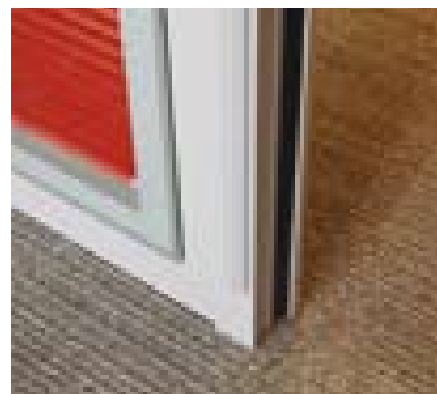
Other elements of the fit out contract that Allied Workspace was awarded included kitchenettes, the design and installation of glass smoke barriers and associated steelworks to atria, and bandit proof screens for high security access.



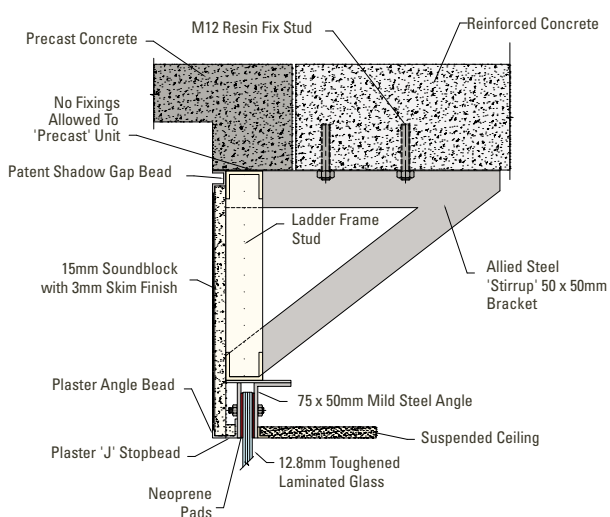
ALLIED WORKSPACE INSTALLED THE LIFESTYLE Ls90 FULLY DEMOUNTABLE RELOCATABLE PARTITION SYSTEM. THIS SYSTEM WAS USED BECAUSE IT MEETS THE CRITERIA SET DOWN IN THE OPW SPECIFICATION DOCUMENT FOR GOVERNMENT PROJECTS AND DECENTRALIZATION WORKS.

Allied Workspace worked within a tight programme and under difficult site conditions to meet the required deadlines. The project plan had to incorporate a logistics schedule to overcome the restrictions of the 5 axle ban and, as the entrance of the building is on a priority bus corridor, offloading and distribution of all materials had to be carried out between midnight and 6am.

Ls90 not only meets the Government's current requirements, but will adapt to keep pace as the Revenue Commissioners' needs change and develop. In brief, the Lifestyle products are fully relocatable which allows for change and future proofing of the building. The modular system facilitates speed and ease of installation to meet the most demanding of programmes ■



SMOKE BARRIER



WALL ABUTMENT

