



Department of Finance

Architects: McCarthy O'Hora

Main Contractor: John Flanagan & Sons

As part of the Irish Government's decentralisation programme, the Department of Finance has recently moved to Tullamore, Co. Offaly.

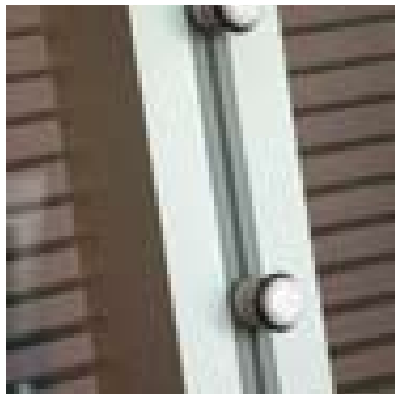
Lifestyle's Ls90 partitioning system was specified because it met the design brief of simple installation with inter-changeable elements and is fully demountable for relocation. The Office of Public Works (OPW) suggested that an in-house design capability should be commissioned to produce a cost efficient, sustainable building based largely on an open plan design. The OPW's aim was to showcase the advantages of a modern layout where senior employees share an open office area, in addition to providing dedicated meeting and conference facilities.

To create cellular offices and meeting rooms throughout the three-storey building, the client worked with Allied Workspace and chose double-glazed Ls90 with integral blinds in combination with solid steel modules. Cherry veneered doors were used throughout, together with matching panels in the boardroom area to create aesthetic value.

TO CREATE CELLULAR OFFICES AND MEETING ROOMS THROUGHOUT THE THREE-STOREY BUILDING, THE CLIENT CHOSE DOUBLE-GLAZED Ls90 WITH INTEGRAL BLINDS IN COMBINATION WITH SOLID STEEL MODULES.



The Ls90 partitioning system is a flush frameless system offering the client impressive performance qualities with fire resistance of up to one hour and acoustic attainment of up to 48dB [45 dB (Rw)] in its solid form. By making the most efficient use of materials in the product manufacturing process, the modular bi-panel partitioning system demonstrates high sustainability ■



SOLID WITH STEEL FACED PLASTERBOARD HUNG PANELS TO DOUBLE GLAZED DETAIL

