

Architects: 3K
Contractor: PJ Walls

Bank of America

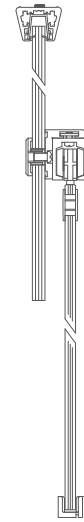
Bank of America, one of the world's largest financial institutions, relocated its Irish headquarters to Park Place, the Clancourt Group's speculative development on Hatch Street, Dublin 2. Park Place was developed by Shoalwater, a subsidiary of the Kenny family controlled company, and is constructed on the former Dunlop centre site, opposite the Iveagh Gardens.

Allied Workspace was successful in the competitive tender for glass partitions for the new offices. The double glazed mullion free Komfort Polar partitions were specified by 3K Architects. The contemporary interiors included walnut doors and frames which complemented the warm colours throughout the office. The staff welcomed the move and found their new space inviting and a very comfortable environment to work in.



MANET SLIDING DOOR DETAIL

ACOUSTICS WERE AN ESSENTIAL ELEMENT OF THE PROJECT. ALLIED WORKSPACE WORKED WITH THE ARCHITECTS TO SPECIFY TEGRAL BLOCKS. THESE BLOCKS ACOUSTICALLY SEALED THE TEGULAR STEEL CEILING TILE, THUS REDUCING THE LEAKAGE OF SOUND FROM OFFICE TO OFFICE.



PROJECTS

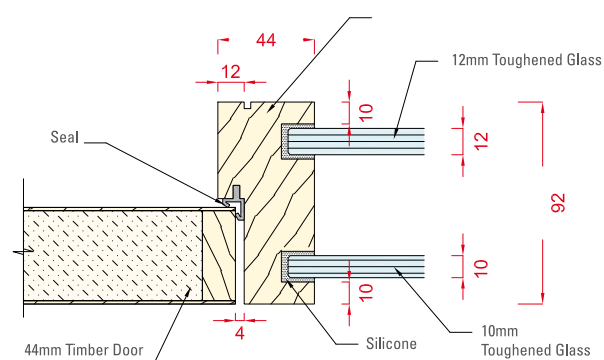
35

The Polar double glazed mullion free system achieves 46dB. Using discreet dry joints between panels, the system achieved high levels in relation to transparency. The double glazed partition was recessed into the door frames to enhance the minimalistic look.

Allied Workspace installed sets of double sliding doors for meeting rooms where acoustics were not required. The stunning Manet mechanism was installed in a number of meeting rooms.

Overall the client, architect and main contractor complimented the Allied Workspace team with the product provided and are delighted with the overall completed interior ■

DOUBLE GLAZED POLAR DOORFRAME



ALLIED WORKSPACE SPACE TO WORK